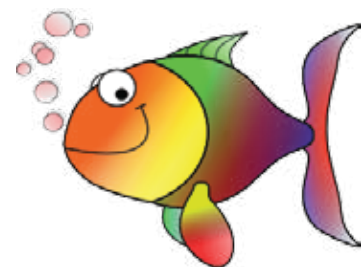


Order of Operations

Name: _____ Class: _____

Calculate, use the BODMAS rules



$5 \times 17 + 14 \div 2 =$

$10 + 8 - 8 \div 4 =$

$17 + 12 - 15 \div 3 =$

$16 \div 8 + 18 \times 5 =$

$20 \div 4 + 3 - 2 =$

$20 \div 4 \times 2 + 13 =$

$14 + 4 \times 12 \div 2 =$

$8 - 8 \div 2 + 19 =$

$12 \div 4 + 8 - 4 =$

$6 - 2 + 8 \times 5 =$

$4 - 1 + 8 \div 2 =$

$11 - 4 + 15 \times 5 =$

$2 + 14 \div 2 \times 6 =$

$10 \div 5 \times 5 + 9 =$

$6 - 8 \div 4 + 12 =$

$11 + 14 \div 7 - 1 =$

$13 \times 10 \div 2 - 1 =$

$17 + 4 - 10 \div 2 =$

$12 - 12 \div 4 + 5 =$

$15 \div 3 + 3 - 2 =$

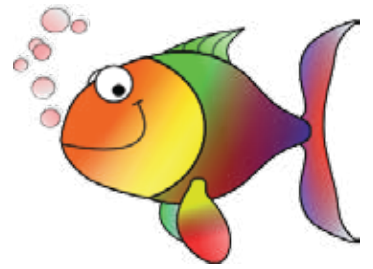
$9 + 20 \div 2 - 1 =$

$15 \div 5 - 3 + 14 =$

$20 \div 2 - 1 + 13 =$

Answers

Calculate, use the BODMAS rules



$5 \times 17 + 14 \div 2 = 92$

$10 + 8 - 8 \div 4 = 16$

$17 + 12 - 15 \div 3 = 24$

$16 \div 8 + 18 \times 5 = 92$

$20 \div 4 + 3 - 2 = 6$

$20 \div 4 \times 2 + 13 = 23$

$14 + 4 \times 12 \div 2 = 38$

$8 - 8 \div 2 + 19 = 23$

$12 \div 4 + 8 - 4 = 7$

$6 - 2 + 8 \times 5 = 44$

$4 - 1 + 8 \div 2 = 7$

$11 - 4 + 15 \times 5 = 82$

$2 + 14 \div 2 \times 6 = 44$

$10 \div 5 \times 5 + 9 = 19$

$6 - 8 \div 4 + 12 = 16$

$11 + 14 \div 7 - 1 = 12$

$13 \times 10 \div 2 - 1 = 64$

$17 + 4 - 10 \div 2 = 16$

$12 - 12 \div 4 + 5 = 14$

$15 \div 3 + 3 - 2 = 6$

$9 + 20 \div 2 - 1 = 18$

$15 \div 5 - 3 + 14 = 14$

$20 \div 2 - 1 + 13 = 22$